



Summer 2011

 **PARTNERS**  
a newsletter for our partners

## Gifts that *Keep Giving*—Building for the Future

By Mark Warpmaeker

In April our group of travelers to the Central African Republic heard repeatedly, we are a poor church made up of poor people. Then one day, while visiting a Village Savings and Loan group a woman said, “We didn’t think we had any money, now we realize that we are blessed.” The Village Savings and Loan program teaches people in small villages how to save money, basic accounting skills, and gives them the opportunity to take loans from their group savings for emergencies and small business opportunities. When Rev. André Golike, president of the Evangelical Lutheran Church in the Central African Republic, was asked about this program, he said, ***“This is the only way we are going to become a self-sustaining church. If the people think they are poor they will never give, if they don’t understand accountability and reporting how can they demand it from their church leaders? This will change the church from the ground up.”***

The Roman Empire built the Pont du Gard aqueduct, pictured at the top of this page, in southern France about the same time Jesus walked

on the earth. While being incredible architects, engineers and artisans, the people working on this bridge could not have imagined their creation lasting for two thousand years. Nor could they have dreamed of the variety of ways the structure would be used over its lifetime. Originally built to carry water from a spring to the city of Nimes, 50 kilometers (32 miles) away, it has also served as a toll bridge, a tax collection point, and today is one of France’s most visited tourist attractions outside of Paris.

There are times when God uses our meager offerings to change lives, build churches, and grow communities. This kind of giving lasts beyond the initial need. It multiplies and continues to give long after those first dollars are spent. God uses these gifts to affect growth beyond our wildest dreams. When we can see God working to improve lives and change systems through our giving, we are changed and our faith grows.

The impact of some LPGM projects is easy to measure. We know how

much the Emmanuel Health Center in the Central African Republic saves each year with a solar power system because we can measure how much fuel the generators burn. With other projects, though, it is more difficult to see their true effect. How do you measure the impact a child’s education has on a family, or a new library on the life of a village?

God has called Lutheran Partners in Global Ministry to projects that stand the test of time and build capacity in churches and communities around the world. Your gifts to LPGM and the projects we support are changing the world—one person, community and church at a time. We can only imagine what God has planned for the capacity built through the education, leadership development, and capital projects we are currently working on. I am amazed at how God connects people and projects through LPGM. Each gift you give to LPGM or through LPGM for a project is building a bridge to the future, a future that only God knows.



## Donors needed to support Village Savings and Loan education in the Central African Republic

So much of what LPGM does creates change from the bottom up. We now have a unique opportunity to help improve the lives of people living in the Central African Republic. A Village Savings and Loan program was started in the Evangelical Lutheran Church in the Central African Republic (EELRCA) two years ago through a grant from the European Union. With this grant over 160 savings groups were created. The E.U. grant is finished, but the EELRCA church leaders want its trainers to continue training new groups in the program so it will keep growing. When the Rev. André Golike, president of the EELRCA, was asked about this program, he said, ***"This is the only way we are going to become a self-sustaining church. If the people think they are poor they will never give, if they don't understand accountability and reporting how can they demand it from their church leaders? This will change the church from the ground up."***

In a Village Savings and Loan program no outside capital is invested, so the participants do not become indebted to an outsider. Instead, each member contributes what they can at weekly meetings.

Loans are made from the combined savings. At the end of a three-month cycle the savings and collected fees from the loans are distributed to the participants. Each group remains together for three three-month cycles.

To continue this program LPGM needs \$35,000 this year—just \$3,000 a month. These funds will allow us to send trainers out into the villages, manage the program on the ground in C.A.R., and administer the grant from the United States. This is an incredible

*"We didn't think we had any money. Now we realize that we are blessed."*

– A member of a village savings group.

opportunity to change a country one person at a time.

Do you feel called to support this incredible program? Are you a member of a church or organization that could commit to one month or three months or the entire year? If so, please contact our office.

See more on the sidebar at: <http://lutheranpartners.org/projects/africa>

### Upcoming LPGM Travel Opportunities

**Argentina:** March 2012 – Partner Congregation Visit

#### Central African Republic:

November 2011 – Focus on Emmanuel Health Center

February 2012 – Delegation visit EELRCA Women's Ministry Convention

November 2012 – Partner Synod Trip

#### India:

February 2012 – School/Church Partnership Trip

July/August 2012 – Connection Trip to LPGM supported ministries.

Please pray for these trips and the people God leads to them. If you are interested in traveling with us contact the LPGM office.

## New Board Member

Betsy Starz was recently elected to the LPGM Board of Directors. She is a Senior Financial Advisor with Thrivent Financial for Lutherans' Crossroads Group in Minnetonka, Minnesota. Betsy was honored with the 2010 Voices in Philanthropy Award from the Lutheran Community Foundation for service in helping clients realize their charitable intentions.



Betsy grew up in West Central Minnesota, attended Gustavus Adolphus College and worked as a camp counselor and summer program director at Green Lake Bible Camp in Spicer, Minnesota. Betsy served for five years on the Gustavus Alumni Association's Board of Directors and has participated in various volunteer positions through church. Her first international mission experience was building homes in Juarez, Mexico, with a young adults group from church. She is currently attending the Upper Room (Church) in St Louis Park, Minnesota.

Betsy enjoys playing volleyball, singing, running, golfing, biking, water sports, sewing, fishing and spending time with family, especially her nephews.

If you know someone who would make a good board member candidate, please contact Mark Warpmaeker: [mark@lutheranpartners.org](mailto:mark@lutheranpartners.org) or 612.823.5058.

## Special contributions to LPGM received through July 31, 2011

### IN MEMORY OF: *Remembered by . . .*

**DENNIS JOHNSON**  
*Susan & David Lindvall*

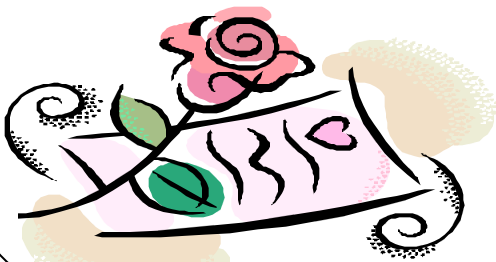
**TAMARA OLSEN**  
*Naomi & Steven Staruch*

**TIMOTHY OLSON**  
*Suzanne & Ken Roeh*

**ROBERT PARUPSKY**  
*Sara Jo & Robert Jensen*

**GLENN REICHEL**  
*Gretchen & David Porter*

**DON WINGE**  
*Naomi & Steven Staruch*



### IN HONOR OF: *Recognized by . . .*

**EVIE ALYASEEN, MARNE ALYASEEN,  
CHARLES DISTAD, JONATHAN DISTAD,  
TESHA DISTAD**  
*David Distad*

**MARGUERITE BLINN**  
*Philip & Dora Quanbeck*

**EVELYN GIPP**  
*Luther & IvaNell Monson*

**ANTHONY LANDO & SHAMAILAH AHMED**  
*Gail & Joe Lando  
JoLouise & Jerry McNally*

**GORDON & BETTY OLSON**  
*Suzanne & Ken Roeh*

**MARVIN ROLOFF**  
*Anne & Doug Westby*

**ELEANOR SAVIK**  
*Philip & Dora Quanbeck*

**NATHAN WARPMAEKER**  
*Tom Furey & Mary Kenning  
Andrea & Craig Komschlies*

## Three Philanthropic Categories

LPGM is fortunate to have a solid financial foundation. We praise God for this blessing.

We recently began discussing from whom and how we have received our financial support over the years.

By far the most popular kind of contribution we receive is Temporarily Restricted. The donation can be called **Project Giving** because it is designated (restricted) by the donor for a specific purpose—India Student Sponsorship or Women's Ministries in the Central African Republic or a construction project in Argentina. Nothing LPGM does would be possible without this type of funding.

No doubt, you have had an organization ask you for a contribution that will be made at some time in your later years or upon your death. Often referred to as **Planned Giving**, we know of twenty giving units who have included LPGM in their will or trust. LPGM would be honored to know that you have included LPGM in your legacy giving. When added to the **Gordon and Betty Leadership Fund**, these contributions will help ensure the future of LPGM and its ministries.

LPGM is also very thankful for a number of donors who contribute Unrestricted funds. Described as **General Giving**, this is the meat and potatoes of our funding. As a staff and the liaison to our international partners, we cannot do anything without this necessary funding of our daily work.

A newly formed LPGM Development Committee will be exploring ways to increase the collective efforts of this funding source. If you need assistance executing your planned giving, project giving, or general giving desires, LPGM has friends in the industry who are ready to help.



LUTHERAN PARTNERS  
IN GLOBAL MINISTRY

122 West Franklin Ave, Suite 319  
Minneapolis, Minnesota 55404

Phone: 612.823.5058

Email: office@lutheranpartners.org

Website: www.lutheranpartners.org

NONPROFIT  
ORGANIZATION  
US POSTAGE  
PAID  
TWIN CITIES MN  
PERMIT NO. 31516

Address Service Requested

To stay connected between newsletters,  
find our official organization page on Facebook  
<https://www.facebook.com/lutheranpartners>  
click the LIKE (thumbs up) button  
Share the link with your friends too!

## Meaningful Giving Perspective from Mary Tinkham and Robert Kean

When we were first married, we talked about the different paths our lives could take. Both of us felt called to live according to Micah 6:8, "... what does the Lord require of you but to do justice, and to love kindness, and to walk humbly with your God?", but we didn't know how our life would take shape. We wanted to seek justice globally as well as locally, but felt no strong calling to become field missionaries. We prayed that God would show us the right opportunity to support mission efforts in a personal, meaningful way.

A short time later we attended a meeting where Gordon and Betty Olson shared their dream of connecting people interested in mission with projects and people around the world. As we sat in the church basement and learned about Lutheran Partners in Global Ministry and its efforts to gather sponsors for children in the Arcot Lutheran Church of South India's boarding schools, we heard the call to do more than sponsor a student or two. That night we made a commitment to support LPGM with a monthly donation beyond sponsorship.

Over the years we have seen marvelous things transpire, lives changed and communities strengthened in ways that resonated deeply within us. Education was enhanced in Tanzania with a project called Mwango Roho in which native stories provided a starting point for the lessons. The recently completed House of Mary and Martha in Bouar, C.A.R., provides literacy and sewing classes and other ministries for women, thereby building community and allowing hope. We currently support the Lebanon Home for abandoned or widowed women in Tiruvannamalai, Tamil Nadu (India), which not only offers shelter but also dignity as the women support themselves by weaving linens and other goods for sale.



Why do we continue to give? It goes beyond the projects and includes the process. LPGM takes a true partnership approach to responding to needs, working with the local congregations and communities to build sustainable solutions. We are reaching more people and in broader areas than we ever imagined. Someday we plan to visit some of the places with which we now have a connection, but until that time we will continue to support LPGM's work with our prayers and our gifts.

---



---

... marvelous things transpire, lives changed and  
communities strengthened ...

---



---